

LINE ARRAY Series

Compact 2Way active line array system

Audio-Performance Line DLA6

The DLA6 Compact Line Array Loudspeaker is a Light, Simple and Versatile product designed to deliver Great Sound into medium and even large venues.

The two way full range Loudspeakers consist of 2 x 6.5" low frequency cone driver and a 1.4" exit, 3" voice coil compression driver mounted in a complex Audio Performance Wave Guide that constrains the horizontal directivity into a 100° angle.

The specific conception enables the DLA6 to reach 55 Hz without the need of a subwoofer and to deliver a flat frequency response up to 18kHz (+/- 3dB). The versatility of the DLA6 stand in the externally amplification possibilities. It can be used either in a fully 2 way active mode or bi-amplified with the SUB6-amp. Each SUB6-amp integrates two AP D2SP amp's modules that together

deliver a total of 5'000W RMS (4 x 1'250W), of which one is a dedicated DSP controlled Amp Module that can feed four DLA6.

The simplicity of the unique patent pending Three Points Rigging system offers easy stacking as well as easy flying and fits in any situation. Setting up the array angle is very easy with the exclusive bended back plate. Angles extension: 0° to 8° for each DLA6 (Angle Step: 0.5° until 4°, 1° until 8°). A support in array configuration is provided by the Audio Performance "EasySpray" software.

The use of a SUB6-amp doesn't demand additional frames, neither in flying or in stacking. A DLA6 array can be build on your own.

The DLA6 is perfectly suitable for touring and fixed applications.

No compromise between size and sound, It's just Small and Powerfull!!

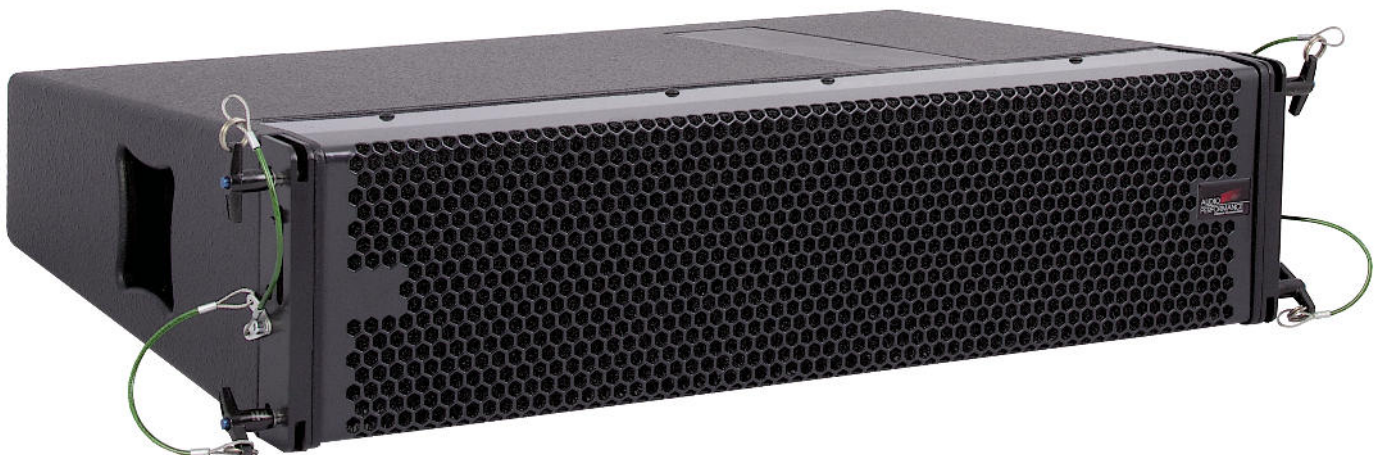
AUDIO
PERFORMANCE
power to perform

IDEAL FOR

Medium
Scale sound
Reinforcement

Concert halls
Clubs

Stadiums
Theatres



LINE ARRAY Series

Line DLA6 Specifications

ACOUSTICAL

Frequency response (1)	55Hz - 18'000Hz
Phase response	350Hz - 10KHz + / - 45°
Maximum peak SPL (2)	128dB
Coverage	Horizontal: 100° Vertical: Varies with array lenght and array configuration
Crossover (3)	890Hz

TRANSDUCERS

Low frequency	2 x 6.5" long excursion, low distortion cone driver
Nominal impedance	16 Ohms
Power Handling	250W RMS (AES) (4)
High frequency	1 x 1,4" exit, 3" diaphragm compression driver, loaded with patented waveguide
Nominal impedance	16 Ohms
Power Handling	150W RMS (AES) (4)
Connectors	2 x Neutrik Speakon NL4MP (wired in parallel) 1+/- = Low; 2+/- = High

MECHANICAL

Cabinet size (WxHxD)	730 x 180 x 460mm
Cabinet finish	15 mm plywood, black epoxy painted, other colours on request
Rigging	Patent pending Three Point Rigging system
Protective grill	Removable perforated 1,6mm steel, foam cover
Weight	25Kg

